

Wormhole Theories, Sunspot Activity and Remote Viewing Stocks

*Published by the Institute for Solar Studies on Behavior
and Human Health, Santa Monica, CA.*

Copyright © 2016 The Solar Institute

All rights reserved.

ISBN-13: 978-1530441174

ISBN-10: 153044117X

ACKNOWLEDGMENTS

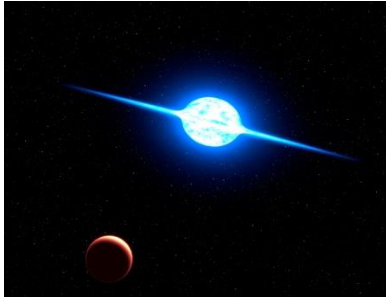
I would like to acknowledge the Carson Smith study undertaken at The University of Boulder, Colorado in 2013 (*C. Carson Smith, et al.. 2013*) for their sharing of their knowledge of remote viewing the Dow Jones and for creating the inspiration to make this book possible

Special thanks also go to Remote Viewers Joseph McMoneagle and Courtney Brown for their dedication and their sharing of knowledge about how Remote Viewing works

DEDICATION

*This book is dedicated to fearless individuals
envisioning a better world by using their
true gifts and talents*

Front Cover Image: Pictured is the star Rasalhague, the brightest star in Ophiuchus which rises in the east at **13:30LST**



We create our own future by how we
think about the future

Take your remote viewing skills to the next level.
Published by the Institute for Solar Studies, this
guide shows how anyone can become an expert
at Associative Remote Viewing and use
it for healing or better understand
their true potential.

Read the first **3 chapters free** by visiting:
www.ez3dbiz.com/remote_viewing.html

A complete **archive** of more than 60 remote viewing
sessions of the stock market based on
the information in this book is archived at:
www.ez3dbiz.com/remote_viewing.html

Other Titles by the Solar Institute

- 1. Released August 2013 - Anti Aging Nutrition Secrets. The Fountain of Youth Seekers Guide to Longevity**
- 2. Released August 2013 - A Centurion's Toolbox for Longevity Living Beyond 120 - 2nd Edition**
- 3. Released Late-December 2012 - How to Make and Sell Your Own Aromatherapy and Herbal Products**
- 4. Released Mid-December 2012 - How to Sell Your Homemade Products Online**
- 5. Released November 2012 - Solar Visualization Tools for Health and Prosperity**
- 6. Released July 2012 - The Emerald Tablets: The Keys of Life and Death by Thoth the Atlantean**
- 7. Released September 2012 - Living Healthy Beyond 120, A Centurion's Plan for Longevity**
- 8. Released May 2014. - Solar Flares and Their Effects upon Human Behavior and Health**
- 9. Revised December 2016. The Complete Guide to Natural Toothache Remedies and Re-mineralization**

10. Revised October 2016. - **The Official Guidebook of How to Make Tinctures and Alchemy Spagyric Formulas.**
11. Released April 2015. - **The Any Climate Survival Guidebook. Maintain Resilience in Rain, Snow or Desert**
12. Revised November 2015 – **My Book of Stem Cell Longevity Formulas and Nutraceutical AntiAging Combinations. Based on scientific research studies of foods, herbs and extracts proven to grow stem cells that extend lifespan**
13. **Foods, Herbs and Pharmaceuticals that Extend Lifespan. An in-depth research title covering more than 200 herbs and nutraceuticals proven to extend lifespan**
14. Released - Aug 29, 2014 - **Following the Sun. Using Sunspot Cycles to Change Your Destiny and Empower Personal Growth and Other Stories**
15. Released June 2015 - **A Pod Publishing Manual. Free Marketing Strategies for Experienced Amazon Authors**

You may preview the first 3 chapters of any of these books by visiting:

<http://www.ez3dbiz.com/library.html>

Table of Contents

About the Author	29
What is the difference between remote viewing and associative remote viewing?	30
Welcome to the New Frontier	30
The Future	31
Using Associative Remote Viewing to Increase Productivity	32
Why I wrote this book	33
How to Get The Most Out of This Book	35
Unlock the Power Within	35
Introduction	37
Exploring The Quantum Field	37
Photons that Exceed the Speed of Light	38
The Gap between Spirituality and Technology	40
Are we Living In A Hologram?	41
Chapter 1	44
Using Quantum Tunneling to receive messages from the Future	44
Emotions coming Back from the Future	45
The Heart Reacts to Future Events	48

Herbs that Enhance Acetylcholine Levels	49
Quantum Fields and Shapes	49
2012 Scientific Discovery confirms Time Reversal Symmetry Exists	50
Intention Transcending Time	51
Sending Intentions Backwards through Time	51
Forgiveness and Time Reversal Symmetry	53
Sending Intentions Through to Time to Heal	54
Sending Healing Energy to the Past	54
Sending Healing Energy to the Future	55
<i>References</i>	<i>56</i>
Teleportation and Frequency	57
Can Intuition be learned?	57
Chapter 2	60
Ophiuchus, 13:30LST and its Connection to 13:30LST	60
What are White Dwarf Stars?	62
Precognition, 13:30LST and Rapidly Rotating Stars	64
Meaning of the star Rasalhauge	66
Astrology Attributes for the Ophiuchus Constellation	68

Neighboring Constellations	69
After 13:30LST the period of Noise	69
The Star Arcturus	70
The Story of How Arcturus Electrified Chicago	70
Other Facts about Arcturus	71
Chapter 3	72
Why Cycles of Cosmic Ray activity enhance Remote Viewing	72
What is Time Dilation?	72
Time and Its Effects Vary With Solar Activity	73
How Solar Activity Affects the Speed of Earth's Rotation	75
Cerenkov Radiation. Photons exceeding the speed of light	81
Pressure Waves and Going Faster than Light	82
Perception Creates our Experience of the Flow of Time	83
Chapter 4	84
A Documented Account of Physical Time Travel into the Future	84
What Are Lenticular Clouds?	84
The Bermuda high (Azores high)	87

Winter and Air Pressure	88
What is Radiation Fog?	90
How Radiation Fog forms	90
Seasonal highs of Radiation Fog	91
Our DNA as a Hologram	92
Can Photons be used as a Source of Food?	93
The Quantum Field Moves in Spirals	94
Venus Orbits Counterclockwise	96
Chapter 5	97
The Human Nervous System Anticipates Events In The Future	97
The Schumann Resonance and Reaction Times	99
Cases of Precedent Activity in Nature Preceding Earthquakes	100
The Human Nervous System and Low Frequency	101
Chapter 6	103
Infrared, Odors and Scents	103
Negative Emotions Produce Stronger Wavelengths in Time	103

What is Retro Priming?	104
Scent as a Result of Oscillations	104
The Human Receiver	105
Infrared and Power Generation	106
Infrared Used in Healing and Therapy	106
Excess Infrared Emitted by the Gas Planets	107
The Human Transmitter	107
Chapter 7	109
Frequencies that Enhance the Results of Remote Viewing	109
Dreams, 40Hz Gamma and Coherence	111
Telepathy and Alpha Brainwaves	113
Binaural Beat Frequencies that Enhance Intuition	114
Chapter 8	115
Herbs and Essential Oils for Enhancing Remote Viewing	115
Essential Oils that Enhance Remote Viewing	117
Chapter 9	120
Solar and Weather Conditions for Prime Associative Remote Viewing Sessions	120

Environmental Conditions	120
Solar Weather	120
Cosmic Rays in Decline. The Forbush Decrease	120
What is Time Dilation?	121
Location	122
Basalt Acts as a Receiver for VLF	125
Moon Phase	126
Effects of Earth's North Pole Aligning with Celestial Objects	128
The Stars Vega and Polaris	129
The Aurora Borealis	129
My Theory (<i>by the author</i>)	130
What is Jupiter at Opposition?	130
What is Redshift?	132
Scientific Proof of Gravitational Waves	134
Middle Latitude Fredericksburg K-indices	135
What are Middle Latitude Fredericksburg K-Indices?	135
The Right Time	136
13:30 LST and Winter	136
Finding Your Intuitive Biorhythms	137

The Right Weather Conditions	137
High Tide	137
Dew Point	138
Air Pressure	138
My Hypothesis (<i>by the author</i>)	139
Magnetic Midnight	139
What is Magnetic Midnight?	139
The Movie Midnight in Paris and Time Travel	140
Solar Tides and Midnight	140
Moon Phase	141
The Significance of the Ophiuchus Constellation at Midnight	142
The Mars Effect	145
Earthquakes, Moon Phases and Comets	145
Solar Wind Speed and ARV Accuracy	147
A Tree Predicts the Weather	148
Serotonin	148
Peristalsis	149
Negative Ions	150
What is Amplitude?	150
The Hartmann Grid	151

Coherence of our Earth	152
Chapter 10	153
Ratings of Environmental conditions Conductive to Successful ARV Sessions	153
Chapter 11	155
What is Infrasound?	155
What Materials Conduct Infrasound the Fastest?	156
Natural and Man Made Sources of Infrasound	157
What are the most common sources of Infrasound?	159
What are the Strongest Sources of Infrasonic Waves?	159
What is the Interplanetary Magnetic Field?	160
How far can Infrasound waves Travel?	160
How an Earthquake is Born	161
What Is Causing Disturbances In The Density Of Electrons In Earth's Ionosphere Preceding Earthquakes?	161
What is an OH Group?	161
What are Acoustic Gravity Waves?	164
A Balance of Ions	166

Energy Release as a Battery	166
Trees Sense Approaching Earthquakes	167
Basalt Acts as a Receiver for VLF	168
Ionospheric Disturbances and Earthquakes	170
Events involving Time and Gravity	172
Chapter 12	174
Light, Geomagnetism and Precognition	174
Cryptochromes	174
Light Sensitive and Geomagnetism	174
Photons and Magnetic Disturbances	176
Disturbances in Infrared Photons Prior to Earthquakes	177
An Introduction to Scalar Waves	180
What are Scalar Waves?	180
Who First Detected Scalar waves?	180
Scalar Waves and Starlight	182
The 12 Earthy Branches	184
Chapter 13	186
Coherence and Frequency	186
What is Coherence?	186

The 0.1Hz signal and Coherence	186
Facts about our Heartbeat	187
Too Much 0.1Hz Inhibits Successful Remote Viewing	188
What are Geomagnetic Pulsations?	189
Heart Rhythm Meditation	190
Dana Point California	192
0.1Hz in Metropolitan Cities and Urban Areas	195
Wind Speed and the 0.1Hz Frequency	197
What is Syzygy?	198
How Is the 0.1Hz Signal Travelling From the Ocean or Rivers Inland?	198
Chapter 14	200
The Human Cardiovascular System and Low Frequency	200
Frequencies Of The Human Cardiovascular System	201
Mayer Waves	201
What are Mayer Waves?	202

Chapter 15	204
How do I generate Coherence?	204
Using HeartMath for Rejuvenity	206
Chapter 16	208
Stone Levitation, Wells and High Tides	208
Coral Castle	208
The American Stonehenge North Salem, New Hampshire	209
Stonehenge	209
Nan Madol	210
The Great Pyramid of Giza	210
Zorats Karer	211
The Mystical Power of Wells	212
Sandstone and Oscillation	212
Electromagnetic Fluctuations from Planets	214
What is an Accutron Tuning Fork?	215
The Magnetic Fat Boy Boulders	215
Chapter 17	216
The 25% Anomaly and Gravity	216

Chapter 18	218
Moisture as a Medium for Conveying Information	218
The Power of Water	218
Water's Effect on the Environment and Emotions	218
Humidity and Emotions	219
What is the Dew Point?	220
Chapter 19	221
The Associative Remote Viewing Procedure	221
Predicting the Average Close or High	223
Locating the Date	223
The Morning Before Your ARV Session	224
Mid Afternoon	224
3 Or More Hours Before Your ARV Session	224
How Do I Generate Coherence?	225
How to Use Gauging to Find the Answer	226
Obtaining the Numerical Number the Dow will Close	228
Obtaining the Future Strength of the Dow	229
Volatility	229
The Remote Viewing Envelope Technique	231

The Right State of Mind is Key to Associative Remote Viewing Success	232
Tips and Resources for Trading the Dow Jones Industrial Average	232
4 of the best Professional Stock Picking Services	233
Studies Involving Remote Viewing the Markets	234
Chapter 20	236
Seasons, Gravity and Time. Discoveries by the Astrophysicist Nikolai A. Kozyrev	236
Published Papers by N. A. Kozyrev	237
Rotation Increases Weight	239
Density and Time	239
Density and Telepathy	240
Torsion Effects and Time	241
Left Handed Torsion	242
Optical Rotation	243
Chapter 21	245
Moisture and Its Effects on the Density of Time	245

Without Large Stones a Spring Cannot Flow	245
Moisture Boosts Low Frequency Signals	247
Whistlers and VLF	247
The Moon and Moisture	248
Tides are Slowing Earth's Rotation	249
What is The Aether?	250
Chapter 22	251
Earth's Ionosphere, the Frequency of the Future	251
Sudden Ionospheric Disturbances during periods of quiet Geomagnetic Activity	252
How a Lightning Bolt Forms	252
Chapter 23	255
Magnetic Fields, Paramagnetic Materials, Angular Momentum and the Density of Time	255
Weak Paramagnetic Materials Enhance Energy Flow	257
Coconut Palm Leaves and Magnetic Activity	258
Population Behavior and Soil Type	259
Onions and Magnetic Activity	259
Paramagnetism	260

Uses of Tungsten	261
What is Resonance?	262
Matter Meets Anti-Matter	263
Chapter 24	264
The Round Towers of Ireland	264
A Close up of the Force of Paramagnetism	264
Chapter 25	266
Density Affects the Rate at which Time Flows	266
Ideas are not ruled by Distance	266
The Self Repeating Universe	267
Viewing the Future Partly Assists in its Creation	268
Chapter 26	270
Delta And Theta Brainwave Frequencies, Where They Come From And Their Effects On The Body	270
Facts about Delta	270
An In-Depth Look At The Delta Frequency	270
Facts about Theta	271
An In-Depth Look At The Theta Frequency	271

Dolphins and Alpha Waves	272
Intuition and Earth's Atmosphere	273
Natural Sources of Delta and Theta	273
Chapter 27	276
An in-depth study of 40Hz Gamma Waves	276
The Refresh Rate of Thinking	278
Pink Noise	281
40Hz Synchronization in Nature	281
Delta Brainwaves	284
Chapter 28	285
Maintaining the Proper Balance Of Brainwaves for Optimal Physical and Mental Well Being	285
Delta	285
Theta	285
Gamma	286
Alpha	286
Beta	286
Chapter 29	287
Interesting Facts about 0.1Hz	287

A summary of frequencies in the body	287
0.1Hz in Nature	287
The 0.1Hz Signal and the Beach	287
The Ancient Egyptian Emerald Tablets	289
Chapter 30	292
Exercises for Health of the Cardiovascular System	292
Herbs that enhance Circulation and Enhance Night Vision	294
Additional Reading	296
Reports Confirming Repeating Patterns in Solar Activity and Human Events	297
KP (earth's geomagnetic activity) Links	298
Solar Wind Speed Forecasting Links	299
Book Citations Regarding Remote Viewing	300
Remote viewing Experiments and Projects References	303
References Backwards in Time Retro Causation	306
Precognition References	307
References to Solar Activity and Length Of Day	308

TGD References (Topological Geometroynamics)	309
Ionospheric Activity References	312
References. Disturbances In Earth's Ionosphere Preceding Earthquakes	313
References. Gravity Waves during Solar Eclipses	316
References. Solar Activity and Earthquakes	317
References. Torsion Fields and Gravity Waves	322
Remote Viewing References	324
References. Distant Healing	350

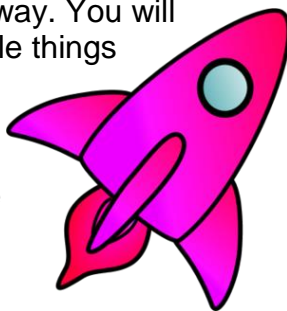
Wormhole Theories, Sunspot Activity and RemoteViewing Stocks

Disclaimer

No guarantee is provided herein in that any person(s) using the techniques described in this book will profit from trading the stock markets. The reader assumes all risk and liability and shall not hold The Solar Institute or its partners for any losses that may be incurred while using the strategies and methods provided herein. This book, where possible, uses scientific references and facts for the information provided. The majority of the studies quoted in this book include papers published in peer review journals, giving the information presented herein the ability for the research to be duplicated. This book includes the key windows that improved remote viewing of the stock market based on more than 60 ARV sessions conducted during 2015.

A WORD OF WARNING TO Readers

When you need to get to a destination quickly you need an engine with lots of power. The further your destination, the longer it will take you to get there. The fastest way to get there is with the most powerful engine available, which is usually in a spaceship. You wouldn't want to become the pilot of a rocket ship without first reading a manual on how to operate it. This book works the same way. You will get to your destination, seeing incredible things along the way, but without the proper instruction, learning the art of successful Associative Remote Viewing can be dangerous. This guide includes all the know-how any reader needs to know to make their journey safe and exciting.



A

bout the Author

Scott is the founder of the Solar Institute in Santa Monica, California and accurately predicted the 2016 stock market turbulence 3 years in advance and published his findings in his July 2013 study titled: Sunspots and the Great Depression. The Solar Institute has published numerous articles demonstrating how solar activity influences the stock market.

Scott is also an inventor and formulated the theory of solar cycles based on the output of energy from the sun and how it impacts emotional and physical health (www.ez3dbiz.com/in_depth.html) .

This latest release includes not only a 1 year summary of Associative Remote Viewing of the Dow Jones, but also a summary of the published reports discussing how solar and terrestrial weather influence the Dow Jones. One of the most astounding discoveries was that there exists seasonal periods for Associate Remote Viewing accuracy. This was discovered to occur during February each year, with the most inaccurate sessions occurring during August of each year. The reason ARV sessions don't peak during July when earth is closer to the sun is because 13:30LST is occurring during the day time. 13:30LST at nighttime peaks around February each year on the west coast of North America where the ARV sessions were conducted.

Upon using the new information obtained during the 2015 Associative Remote Viewing sessions, our Associate Remote Viewing sessions of the Dow Jones have now

peaked to an astounding 97% or better in accuracy. Because the prime viewing conditions occur on average every 11 days, that gives 33 trading opportunities per year, with the odds of success significantly in anyone's favor.

This book includes not only a technique that will make you a better Associative Remote Viewer, but also includes all the solar and terrestrial weather conditions that enhance Associative Remote Viewing sessions gained from over 61 Associative Remote Viewing sessions of the future position of Dow Jones Industrial Average conducted during 2014 and 2015. Use this information to achieve a 100% or near 100% accuracy rate in your own Associative Remote Viewing sessions, save time and increase your productivity.

What is the difference between remote viewing and associative remote viewing?

Remote viewing is looking at places and events in real time. Associative Remote Viewing is where we remote the future. From our research the furthest we have been able to see out during an ARV is a maximum of 4 days in advance, anything beyond that is lost in the quantum stream of potential realities yet to be realized and we have to use solar cycles to plot further out, which we will get into a little later on. Although this 4 day rule has only been tested on the stock markets, further research is needed to see if it also applies to other fields. In many locations in this book we are going to substitute the term **ARV** in place of Associative Remote Viewing, not only because if you read it enough it may bore you, but also because it is easier on my fingers.

Welcome to the New Frontier

We are currently in the midst of a revolution of human potential, one as profound as the founding of Einstein's theory of general relativity. The innate desire in every

individual is to explore dimensions that exist outside of our waking conscious experience. Associative Remote viewing is a part of this emerging new paradigm, taking users to a new world of unlimited potentiality. What science is now proving is that we are not a mere bag of biochemical reactions, but instead exist as a coalescence of energy interacting with a greater field of energy that interconnects with all living beings. This energy field has a fixed frequency pulsating to the alpha and the omega of our universe and is the driving force for our unlimited potentiality. It gives us the power to forge any destiny we choose and to fulfill our ultimate desires.

The Future

Before we begin I want to make one thing clear. Associative Remote Viewing is not about making money in the stock markets, even though more and more people are discovering for themselves how to do this. Associative Remote Viewing is all about getting behind the looking glass and observing the events before they filter down into the conscious world. When you don't like what you see, change your future and create a new timeline, making missed opportunities a thing of the past. Associative Remote Viewing is also about discovering the unlimited potential we hold within ourselves and how to use that power wisely. There is nothing wrong with making money using your talents and gifts, however when money becomes the sole purpose, it is easy to ignore the fact that the ability to successfully use Associative Remote Viewing is really about connecting with the universal quantum field which as a whole works on a grand scale to guide evolution towards harmony.

Using Associative Remote Viewing to Increase Productivity

In a video by expert remote viewer Courtney Brown (video title: Courtney Brown on Multiple Universes) he discusses that by working with alternate timelines that we can increase man's productivity and guide mankind along a path of better evolution. Research published by the Solar Institute has shown that the Dow Jones always shows stronger activity or has higher gains just after a period of higher solar activity has taken place. This is when the solar wind speed enters the speed of between 350 and 420. Therefore if the Dow always has increased gains and shows stronger productivity during this specific period, than this proves that it is a period when the timeline is solid or more secure and stable. If we want to create a guiding map to positively guide mankind towards positive evolution, than we need to study the companies in the Dow that are getting consistently good results during these specific solar conditions. We could also search for other organizations, Institutions and Business entities that show positive growth and are yielding positive results when the solar conditions are right. When we know an organization is getting good results during the right solar conditions, than we know it is already naturally creating a blueprint towards a higher evolutionary path for mankind.

In any short term event where you need to know the success of an outcome, Associative Remote Viewing can be the ultimate solution. Examples Associative Remote Viewing can be used for include: improving weather forecasting, accelerated healing, knowing if your training routine will help you win tomorrow's race, whether the movie or trailer you are making will succeed or flop, where an approaching tsunami or hurricane may go, looking for any problems in releasing or developing a new product, how much rainfall is coming and nurture peace between distant nations and much more. When you have realized this concept, you won't need to use Associative Remote Viewing to make money in the stock market because you will feel a stronger sense of

satisfaction that you are aligning yourself with universal purpose.

Some people may think *"Well why it's the end of work. We never have to work again!"* The fact is there are companies that have more than enough money that are now using remote viewing to develop amazing new technologies to make the world an even better place for all. Once a person has achieved the basic necessities of life which are food, energy self-sufficiency, health, shelter and warmth, they naturally move on to pursue goals related to community enhancement or investing in new forms of social capital. This than fulfills the individual's need for self-esteem and confidence, leading eventually to self-actualization.

Why I wrote this book

I had always wanted to explore Associative Remote Viewing, but had a hard time finding a solid and daily self-repeating target that contained daily results. I than came across a research paper published by the University of Boulder, Colorado where students used Associative Remote Viewing to view the future position of the Dow Jones. (Christopher Carson Smith, et al., 12/7/2013) Being born in Boulder Colorado, where generations of my family went to Boulder University, this project had a particularly passionate flavor to it. This book is the result of the patterns I discovered that significantly enhance ARV accuracy.

Because Associative Remote Viewing is such a new science and this book is probably one of the first of its kind that covers a 1 year research summary of Associative Remote Viewing sessions. I have added where necessary the scientific explanations, including peer reviewed papers, that explain why I achieved the results I did.

All research material from the 1 year study of remote viewing the dow jones is available by visting the address below:

www.ez3dbiz.com/remote_viewing_archive.html

How to Get The Most Out of This Book

The information in this unique book gives examples that can be successfully used by anyone to learn more about Associative Remote Viewing, however it is not a strict how to course. Use the information and research provided in this book to significantly improve your powers of precognition. The sophisticated scientific terminology usually reserved to academia who can interpret the data and valuable concepts has been translated into simple language anyone can understand for you. Anyone can successfully remote view the future position of Dow Jones, as the University of Boulder Dow Jones Study has already proven. This book is intended for those seeking simple facts clearly showing the connection between our minds and the quantum field and how to use this universal field to improve precognition. The information includes professional precognition research studies done by leading Scientific and Educational institutions over the past 2 decades.

Unlock the Power Within

By learning to harness the power of Associative Remote Viewing, you will interconnect with the quantum field of divine energy. Discover the power to create joy and heal in all areas of life. Live as an example instead of as a warning. Use the information in this book to unlock this power and speak directly to the force linking all of creation.

After reading this book you will no longer perceive the universe as separate and compartmentalized, but instead as an interconnected force existing within each one of us, which makes us co-creators of our waking moment to moment reality, allowing you to think beyond your everyday limited experiences and conditioning. The universe becomes richer, more stimulating and truly alive as many new dimensions

open up beckoning to be experienced. A life of passion and excitement now become the norm where successful choices are made one after the other, rather than being locked into motion by fate.

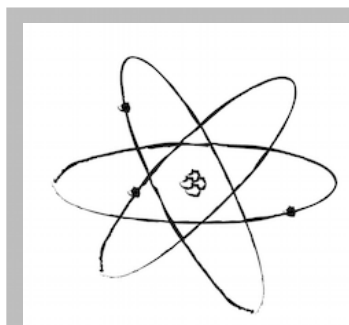
Whatever your ambition, learn how to harness the power of Associative Remote Viewing and stop accepting that everything occurs as the result of random events set in motion by unpredictable forces. Get behind the lens that governs.

Now an important decision has to be made, if you want to continue further down the rabbit hole read on. If you like your world just the way it is then don't read any further and put this book down.....

Introduction

Exploring the Quantum Field

The greatest way to increase your Associative Remote Viewing skills is to understand the connection between the quantum world and nature. Once you get a general understanding of how these two are both interrelated, Associative Remote Viewing significantly increases.



The philosophies taught by Isaac Newton and Darwin taught that our consciousness exists separate from the 4th dimension (time), making us think everything happens by chance. We are taught that for every winner that there must be a loser. It is this false belief

that traps us in the belief that our destiny is predetermined. French philosopher Rene Descartes had a different view; that the world was composed of objects that behaved with absolute predictability. It is our conscious mind that does the observing as we sit outside looking in on events, rather than being bound by its rules.

We are not evolutionary accidents. Throughout the millennia our survival instincts have shaped our genes to dispose of the weakest links, creating an environment where life is about winning, getting there first and making it to the top of the ever expanding evolutionary tree. Currently our existing scientific paradigm is over 300 years old based on outdated Newtonian concepts. These concepts lead us to believe that we are bound by third dimensional space, from which all matter is governed. For centuries this belief has been

enforced by religious institutions, who teach that survival is only attained by those whose genes have withstood the challenges life has confronted them with. This belief praises separation between our connection to the quantum field and the connection to our higher selves. Our perception and cognitive functioning is a direct result of quantum information pulsating and flowing simultaneously throughout our DNA, relaying thoughts, feelings and emotions throughout our entire being.

Dozens of scientists from prestigious academic institutions challenging the status quo have proven that all matter exists in a superimposed state of quantum flux creating the vast hologram we experience. The underlying matrix of the quantum field that creates our everyday experience is based on an unlimited flow of information instantaneously exchanging itself with all living things in our environment.

The Einstein-Podolsky-Rosen experiments showed that measurements made of a particle caused instantaneous information to come into our universe at the newly measured particle positions. This occurred due to the combined conservation of angular momentum which allows the coherently entangled second particle, no matter the distance, to create a two way form of instantaneous communication. (Can Quantum-Mechanical Description of Physical Reality Be Considered Complete? A. Einstein, B. Podolsky, and N. Rosen Phys. 15 May 1935). Physicist David Deutsch states in his book, *The Fabric of Reality*, that the double-slit experiment is good evidence for the many-worlds interpretation.

Photons that Exceed the Speed of Light

Similar to the Cerenkov radiation effect we discussed earlier where photons travel faster than light speed, another experiment has reached a similar conclusion. In a double slit experiment when researchers used a common camera to

observe an electron, it acted like it was a particle. When no equipment was used the electrons then became both waves and particles together. However in 2002, researchers decided to change the equipment so the photons could not know they were being watched. They used an interferometer to observe the electrons. It took 40 nanoseconds to insert the interferometer and 160 nanoseconds for the information about the configuration to travel from one interferometer and reach the photon before they entered the slits. If the photon knew it was being watched, then it would have to have travelled at 4 times the speed of light (Wheeler's delayed-choice thought experiment: Vincent Jacques. et al. 13 Oct 2007), (Double-slit quantum eraser. S. P. Walborn et al).

Another way of looking at it is that we exist in a world of ones and zeros. When we focus on a single number, there is no longer randomness, with the single number becoming a single moment in time. In other words before a measurement is made, a system can be in any one of multiple states of existence. Once there is an interaction with the system at the quantum scale, the photons interact with the environment eliminating all other possibilities. Perhaps as we are observing the future, we are guiding it towards its sustained evolution.

Just as radio waves can become polarized via the Faraday Effect when passing through earth's ionosphere, light can also become polarized. Light can become polarized by passing it through very thin openings aligned in the direction we want the light waves to be polarized. When the waves approach the opening, they are vibrating at oblique angles, therefore they cannot get through the vertical slits. However if the waves are vibrating in a direction close to vertical, they can vibrate right through the openings. This means the exiting light will be vibrating up and down and the light waves vibrating at other angles are now stopped by the barrier. The light exiting the other side is now polarized light. If the

light is made up of a crystalline material, it will split into a fast ray (lower refractive index) and a slow ray (higher refractive index) and when the light exits the crystalline material, it will recombine itself into a single beam of light.

The Gap between Spirituality and Technology

Our technology has made us masters of the universe with very little thought given to our spiritual and metaphysical growth, leaving us feeling lonely and isolated. Besides the recent breakthroughs in mind dynamics (Heartmath, The Neuro Emotional Technique, Theta Healing etc.) we are no closer to answering the fundamental questions of human consciousness. We thought quantum physics was going to solve this mystery for us, but it barely touches what lies below a vast surface of how time and space really function. At most, quantum physics has only served to widen the gap between technology and true spirituality.

The true pioneers of quantum mechanics, Werner Heisenberg, Erwin Schrodinger, Niels Bohr and Wolfgang Pauli spent their entire lives trying to understand the behavior of electrons and that if electrons could exist everywhere simultaneously then there must exist somewhere a mathematical equation that would explain it all, unifying the behavior and answering the "spooky action at a distance" question. Today quantum physicists show a connection between matter that is cold and dead, giving them a false sense of confidence that the quantum effect can only exist in the world of the dead and that living life forms are governed by the laws of Newton, Darwin and Descartes. It is from this false philosophy that modern medicine and biology derive their everyday practices from.

The absolute crown jewel of quantum mechanics, known simply as the double slit experiment, which we covered previously, showed that physicists had to accept the fact that human consciousness interacting with the experiment by the

mere act of simple observation was the underlying central mechanism that created stability at the subatomic level. This had the world's best physicists scratching their heads "How could electrons not stand still until we look at them?" One field of science clearly answers all this strange and bizarre behavior. That is the quantum field creates the hologram we live in.....

Are we Living In A Hologram?

Superimposition means that a single particle of matter can also exist in multiple places at once. The theory states that there exists more than 3,000 separate locations for just a single wave function occurring from a single particle. This state of existence is also called the Bose Einstein Condensate, which is a universal field at the plank level which complements the collapsing waves that creates our waking reality. Because subatomic particles exhibit fourth dimensional behavior, it makes sense that our thoughts may be part of a huge hologram.

Our creative experiences are the rare moments when we experience the superimposed collapse within the hologram, with no time seeming to have passed. This occurs most often when our brains are in theta. This is the moment of "ah-ha", the creative act of self-realization. This experience can also lead to a profound personal transformation of oneself. By harnessing neural cognition by putting our brainwaves into a coherent state of low to mid theta, the quantum world of probability becomes a singularity, where what we focus on comes into our waking consciousness. It immerses our neuronal networks into the quantum field, allowing us to become more closely connected with the universe and each other.

Science is starting to show that our brain acts as an interactive system that exists within a larger quantum mechanical macrostructure interface, which complements the neurons of our brain, which then give rise to our perception of "reality". This would mean every single subatomic particle in our body represents a wave form of the universe creating our holographic reality allowing for deeper communication within ourselves which in turn allows for clearer communication with the overall universe.

So in summary, when we are in a coherent state and remote viewing the future, we are looking at probable futures that are interacting with the quantum field. As we observe these probable futures, one of them collapses into a single future by mere observation, removing all other probable universes. We may in fact be obtaining information not just from our own universe, but from a number of multiple universes. Now we are going to get into the gems of this book, jewels everyone has been seeking, the golden egg that will unlock the connection between you and the quantum field that encompasses the hologram we exist in.

Wormhole Theories, Sunspot Activity and RemoteViewing Stocks

Chapter 1

Using Quantum Tunneling to receive messages from the Future

Before we go any further let's look at some real world examples of interactions with the quantum field. In the quantum tunneling experiment shown on the Anderson Time Travel Institute page, light pulses are shot into a chamber. This chamber is filled with cesium vapor (fog/vapor). As the amplitude from this energy builds from the repeating energy, information about the incoming pulse gathers towards the leading edge (front) of these waves. This wave of energy and information is all the cesium atoms need to echo this pulse, sending it out the other side of the chamber. As this occurs, an opposite wave form begins, rebounding inside the chamber. This causes a cancelling out effect as the incoming pulse enters the chamber, creating a very powerful echo/reverberation. By this time the new pulse is now moving faster than the speed of light, and is travelling about 60 feet beyond the chamber. This expanded force is caused by the pulse leaving the chamber before it starts to enter it, due to the fantastic speed, essentially traveling backwards in time. (Quantum Tunneling. David Lewis Anderson, Ph.D. andersoninstitute.com).

In a paper published by Dirac in 1938 he states that a pulse sent out from a fixed point that has a receiver at the receiving end will start to receive electromagnetic waves when an electron is in between them. The electron in the center starts to oscillate before this pulse reaches the center. This emitted radiation from the oscillation is then able to be detected at point b before the pulse is sent (Classical Theory of Radiating Electrons. P.A.M. Dirac 15th March 1938).

Emotions coming Back from the Future

Psychology Professor Daryl Bem of Cornell, suggests people can experience emotions from the future. His theory is based on the concept that "time is leaking", causing the future to slip back into the present. In a test performed by Professor Bem, he gave 100 students a computer quiz. The students consisted of 50 females and 50 males. The entire experiment used a computer and lasted approximately 20 minutes. After the students answered a series of brief questions, pictures of two curtains appeared on the computer screen. One curtain contains a picture and the other curtain has a blank wall behind it. While looking at the screen, the student then asks, which curtain contains the picture behind it?

After clicking on the curtain it then opens, allowing the student to see what is behind it and the computer records whether or not the student clicked on the right curtain. The entire number of images totals 36. Several of these images contain explicit erotic images (such as couples engaged in nonviolent but consensual sexual acts). So now we have two curtains. Behind one is a wall and behind the other is a picture.

Because the computer has been programmed to randomly display the curtains one would expect the student to correctly choose half the time, totaling a 50/50 rate of performance. However Professor Bem discovered something rather unique. Out of all the sessions, the success rate for those that were shown the erotic stimuli totaled 53.1%. The hit rate of the students shown non-erotic photos remained a constant 49.8%. Professor Bem repeated the experiments over and over and got the same results. The only explanation is that emotions are not bound by time. The students somehow 'knew' that a future image was going to be especially arousing. This occurred due to the "reward"

effect. The reward effect is where a person is more likely to perform better when they are rewarded for an act, much like we give our dog a treat when she performs a trick for us. In this case, the tasty reward of "hot action" got passed backwards through time, using emotion as the carrier wave.

Analyzing brain activity during the test Professor Bem found that the information arrived at the brain before the computer even had shown the image. He stated "*The students physiological responses are observed to occur approximately 2 to 3 seconds before the appearance of the photo, even before the computer decided whether to present a non-arousing or an arousing picture*". In conclusion this effect has been shown to remain constant across nine different experiments, that have involved more than a thousand people. So the effect is cumulative.

The Second Study Performed By Professor Bem

There have been a few studies involving people who look at images or words after a test or exercise. This "priming effect" has been shown to increase precognition in some studies. An example of this is people study in order to pass an exam by going over the subject material before the exam begins. However what if you studied after the exam?

In Professor Bem's second study 100 students were shown a list of 48 nouns that were flashed on a computer screen, one at a time, for three seconds. Students were told to look at the word and try to visualize it (see "tree;" than imagine "tree"). Next go on to the next word. After this, the students were told they were going to be given a quick memory quiz. The quiz involved asking the students how many of the words that you just saw can you now recall. The students then entered the words they remembered. Next the computer sifted through the same list of words and chose 23 of them at random. The students were told that before this test concluded that they are to scan and then type in the

words that the computer selected. When the students typed in the words, they were entering the randomly selected words to memory. The test was now concluded. When Professor Bem checked the original recall test, an interesting pattern showed up. The pattern revealed that the students were better at recalling the words they had scanned and retyped after the test was over.

Using a control group, towards the end of the study they never asked the students to retype the words. The results were that the words were not recalled as often. Professor Bem concluded that "*The results show that practicing a set of words after a recall test reaches back in time and facilitates the recall of these words.*" Melissa Burkley from Psychology Today states that this small effect averages out to an effect size of .20 (from a possible range of 0-1). This gives it the same status as other research studies which have concluded well-established effects. They include calcium intake and bone mass, second hand smoke and lung cancer, aspirin and heart attack prevention and condom use and HIV prevention (Bushman & Anderson, 2001).

Feeling the future: experimental evidence for anomalous retroactive influences on cognition and affect. March 2011. D.J. Bem.

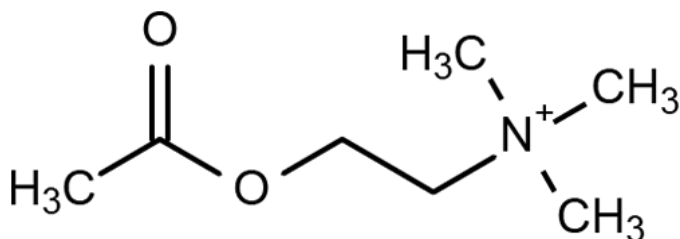
Additional Papers:

How quantum brain biology can rescue conscious free will. Stuart Hameroff. 2012.

Future directions in precognition research: more research can bridge the gap between skeptics and proponents. Michael S. Franklin et al, 2014.

The Heart Reacts to Future Events

In a scientific study titled "Heart Rate differences between targets and non-targets in intuitive tasks" written P.E. Tressoldi and published in December 2005, the experiment involved having the subject guess which picture the computer would select. The experiment yielded a statistically significant heart rate increment before the pictures were shown. (Tressoldi et al., 2005). Dr. Andrija Puharich states that this intuitive ability to future information is enhanced by the substance acetylcholine. This is because the parasympathetic nervous system shows an increase in released acetylcholine during precognitive events. Acetylcholine functions as a neurotransmitter in the nervous system.



Other substances that boost ambulatory action in the nervous system include adrenaline and epinephrine. It seems that foods that induce acetylcholine in the body seem to help increase ARV results. Foods high in acetylcholine include sunflower seeds, cottage cheese, tofu, bananas and sesame seeds. Bamboo happens to contain extremely high amounts of Acetylcholine. What is also interesting is these are all foods that help balance and maintain healthy levels of HGH (human growth hormone). When serotonin and acetylcholine are combined they work together to produce a more powerful antidepressant response (a good combo is bananas and bamboo shoots). Acetylcholine is also used during eye surgeries so the eye muscles can contract and constrict the pupil.

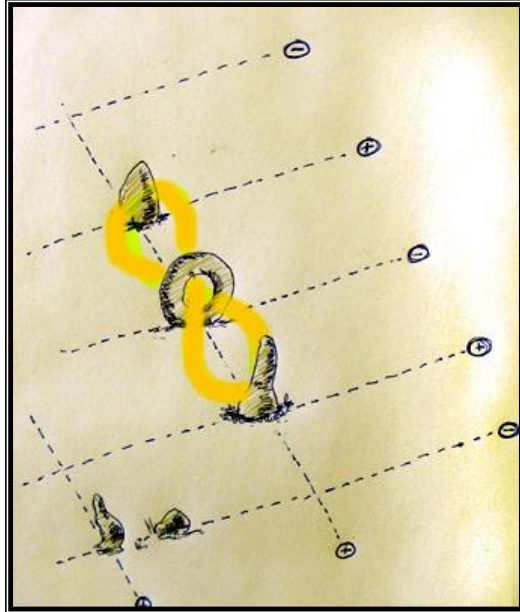
Herbs that Enhance Acetylcholine Levels

Over the years I have discovered that many of the herbs I had been taking which enhanced my ARV sessions were also herbs that enhanced Acetylcholine Levels. They are the following: Gotu Kola, Rhodiola Rosea. Both Gotu Kola and Rhodiola Rosea also enhance the nervous system. Other herbs include: Ginkgo Biloba, Ashwagandha, Carnosine, Fo-Ti and Ginseng. Vitamins B1, B6 and B12 of which can be found in brewer's yeast, marmite or vegemite. Another which is supposed to enhance Acetylcholine levels, of which I have not yet tried is Bacopa. Many of these will also boost serotonin levels, so be sure not to take too much as excessive amounts of serotonin boosters can cause depression.

Quantum Fields and Shapes

About three miles northwest of Madron in Cornwall, England, there exist a stone formation known as the "Crick Stone" (pictured below). Its official name is **Men an Tol**. There have been many people who crawl through the center hole to receive healing. The formation is arranged with two large stones placed at opposite ends of each other with a round donut type hole stone in the center. As earth's energy flows through the 2 upright stones it creates a möbius type coil energy pattern in the center stone, of which a person can crawl through the donut stone and receive healing. It is especially powerful if there is an underground stream running north/south under this spot. It is also very likely that solar and lunar positions may enhance the effects. This design makes for a simple and powerful healing configuration, in that a significant amount of energy is created by utilizing pre-time energy which facilitates healing. What is happening is the layout of the stones is creating a

healing energy in the region that is coming from the quantum field.



Above Image courtesy of **Mr. Freddy Silva**.
(www.invisibletemple.com)

2012 Scientific Discovery confirms Time Reversal Symmetry Exists

At the subatomic miniature scale, time reversal effects can be quite noticeable. Any reaction occurring in one direction can also occur in the opposite direction. One of the very first scientific experiments to confirm this was discovered by collaborators in an experiment named BaBar, which was conducted at Stanford University's SLAC National Accelerator Laboratory during 2012. This was the first scientific experiment that directly observed time reversal occurring.

The paper was published the 19th of November 2012 and titled: Observation of Time-Reversal Violation in the B⁰ Meson System. J. P. Lees et al. (The BABAR Collaboration). The experiment studied collisions of electrons and positrons, which represent the antimatter equivalent of electrons. These produce B mesons. The experiment first began in 1999 and ended in 2008, however new discoveries are being made as scientists sift through the massive data pile years later.

Intention Transcending Time

There have been reported unusual time effects occurring during PSI experiments which have been termed time-reversed interferences (TRIs) (Klintman 1983; 1984). Similar names include time-reversal effects (TRE) (S. Child, Smith 2004). In most cases some subjects will react to events or stimuli which have not yet happened and in other cases, healers report that the limits of time have been transcended, due to shifts occurring. Frans Snel and P. C. van der Sijde devised an experiment to study this effect further. A controlled study conducted by them involved distant healing for rats that had malaria. The experiment involved sending healing at the end of the experiment instead of at the beginning. The experiment suggested backwards-in-time healing effects did indeed occur (The effect of retro-active distance healing on in rats. European Journal of Parapsychology. F.W.J.J. Snel and P.C. Van der Sijde).

Sending Intentions Backwards through Time

Many of these time reversal effects are occurring from PK experiments where the test subject tries to influence a target. After witnessing this effect in numerous experiments, researcher Helmut Schmidt decided to test this effect against

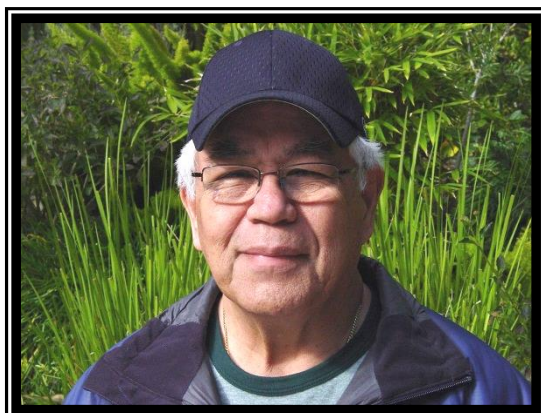
time (Helmut Schmidt. Dec. 1993). Dr. Schmidt used a random number generator producing 0s and 1s at a randomly pace. The sequence was recorded magnetically (without anybody observing it) and locked away. A few days later, Dr. Schmidt replayed the data for subjects involved in PK which used a machine registering the 0 as a red light, and the green light as a 1. Next he had the PK subjects 'focus and concentrate' so as to skew the distribution of lights towards either red or green. He discovered that to a small degree, the subjects altered the pattern of lights from the expected random distribution of data by 50%, going either towards more green or red. What is significant about this experiment is the string of data that determined the sequence of green or red lights had already been generated before the PK subjects used focus and concentration to change it. The experiment showed that retroactive mental influence is possible (P.K effect on pre-recorded targets. H. Schmidt 1976).

As Dr. Schmidt was publishing his papers on the above experiment in 1976, French researcher Pierre Janin also devised similar experiments involving 'psychokinesis into the past', which were also published in 1974 and 1975 (*Perspectives sur les relations entre la psyche et le cosmos*. Janin P. Nouvelles. 1973). During numerous new experiments conducted by Dr. Schmidt his studies consistently found statistically significant occurrences occurring in inanimate systems (H. Schmidt et al., 1986, 1988, 1990, 1993 and 1993). This experiment has been independently duplicated by others, confirming retroactive, mental influence in living systems (E.R. Gruber, 1979, 1980; F.W Snel, 1990; H. Schmidt 1997; D. Radin 1998). Stephen Braude's mega analysis of 19 studies that involved living systems from the years 1979 to 1990 displayed small to medium effects that were small, due to them occurring at the subatomic scale, however the overall p value for all studies was .00000032, which is extremely significant (Altern Ther. Wellness implications of retroactive intentional mental influence: exploring an outrageous hypothesis. 2000).

Some of the most profound effects of time displacement involved emotional stimuli, caused by the nervous system where subjects were exposed to random emotional and non-emotional stimuli. The studies showed that the subject's autonomic arousal increased when exposed to emotional images, and that they decreased when shown non-emotional images. The majority of the subjects responded 5 seconds before the image was randomly displayed. This effect is termed 'presentiment' due to precognition operating at the person's unconscious and involuntary bodily functions (D. Radin 1997; D.J. Bierman 1997; Altern Ther 2000).

Forgiveness and Time Reversal Symmetry

Because Forgiveness is so intertwined with healing, are effects from practicing forgives causing healing of trauma to occur in the past? Perhaps acts of forgiveness are partly interconnected with time reversal symmetry.



Some of you may have heard the story of therapist Dr. Ihaleakala Hew Len in Hawaii (pictured above) who had completely cured a complete ward of criminally insane patients. He never even had to interview or talk to them.

All he did was study the person's chart, then said the words 'I'm sorry', 'I love you' 'I forgive you' over and over again. When he did this over and over again, he found himself improving, as well as the patients. This healing process is known as ho'oponopono. During the process, shackled patients were allowed to walk freely again and others who were heavily medicated were no longer needing their medications. Many who had no chance of ever being released were healed and allowed to go. Today that ward is now closed. Dr. Ihaleakala Hew Len states the way he did it was he healed the part of him that created them. He states that total responsibility for what happens to you means everything happens because it is a part of you; thus the whole world is part of your creation. All problems exist as a projection coming from inside of you. External influences are not the problem, you have the power to change what is within to create the change. You make the choices that determine your future. When you can learn to love yourself, it is the most powerful way to improve yourself, and then the world.

Sending Intentions Through to Time to Heal

These techniques are adapted from the book: Energy Healing for Everyone: A Path to Wholeness and Awakening by Healer Brett Bevell.

Sending Healing Energy to the Past

If you want to send energy back into the past, then focus on a date in the past and with your palms facing away from you simply intend that light of your deity (God, Buddha etc.) is flowing to you at that specific moment in time. Hold this intention for a minimum of 5 minutes, or longer if it is a severe trauma. You will then feel an odd sensation of the

energy coming back to you backwards in time, along with a shift in your memory of the traumatic event. This is normal and shows that the healing is taking place. You will also notice that any negative energy associated with the event will start dissipating. If the trauma is particularly severe, than it will require numerous treatments and may work better around the month of February of each year. You now have the ability to send healing energy repeatedly to painful points along various timelines in your life until they are completely healed.

Sending Healing Energy to the Future

To send healing forward in time, instead of dealing with having to experience future trauma (which you may get sometimes as a vision), prevent new traumas instead. This can be done by blessing yourself in the future with an euphoric sensation. To begin, pick a time in the future, a maximum of a few hours out or even a few minutes. Some people may even feel a need to go a few days into the future. Next place your hands with your palms facing away from you and allow the light of your deity to flow to you forward in time to that specific hour and hold that intention as the energy flows. Do this for 5 minutes and then relax. Next when the appointed time arrives, find a quiet undisturbed place to sit or lie down so you can enjoy the effects. If you have had a vision of a trauma or other negative act occurring, this vision should then fade.

References

Effects of Distant Healing Intention Through Time & Space: Two Exploratory Studies

Dean I. Radin, Ph.D.; Fatima Regina Machado & Wellington Zangari.

Wellness implications of retroactive intentional mental influence: exploring an outrageous hypothesis. *Altern Ther Health Med.* 2000;6(1): 37-48. Braud W.

Conscious and anomalous non-conscious emotional processes: A reversal of the arrow of time? *Toward a Science of Consciousness*, Tucson III. MIT Press, 1999, 367-386. Bierman, D. J. & Radin, D. I. (1998).

Delayed but not Immediate Time-Reversed Preference of Neutral Pictorial Stimuli in the Mere Exposure Paradigm. Alexander Batthyany & Ivan Spajic.

Distant Healing, Daniel J. Benor, M.D. ABSTRACT: This article reviews 61 studies of distant healing.

The Precognitive Habituation Effect: An Adaptation Using Spider Stimuli Louie Savva, Robert Child & Matthew D. Smith. Parapsychology Research Group, Department of Psychology. Liverpool Hope University College.

Time-reversed human experience: Experimental evidence and implications. Dean Radin. Boundary Institute Los Altos, California. July 2000.

Additional References at the end of this book.

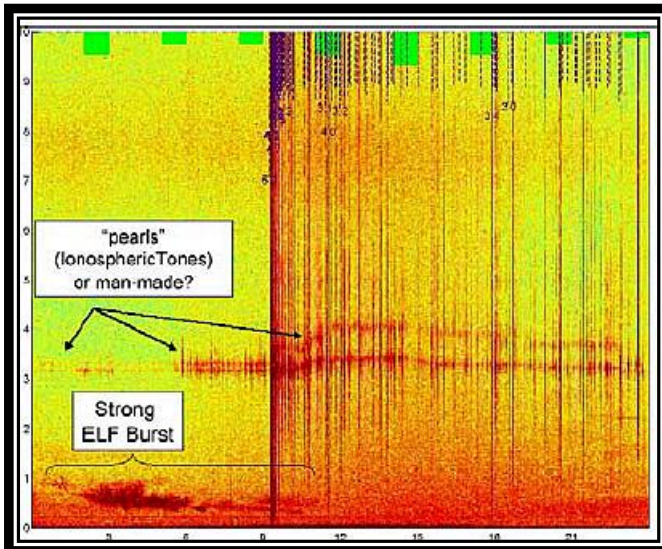
Teleportation and Frequency

In September 1981 in the Chinese journal titled: Ziran Zazhi "Some Experiments on the Transfer of Objects Performed by Unusual Abilities of the Human Body" (Shuhuang et al., 1981) the journal reported that gifted children caused the teleportation of small, physical objects from one location to another. One of the items that was teleported was a radio frequency transmitter. Momentarily before it was teleported, the frequency changed dramatically during the time it was teleported. The electromagnetic waves slowed for a quick moment and then went back to their normal frequency after it had been teleported. The frequency of the radio transmitter had been stable just before and after it was teleported. In quantum mechanics frequency is a measurement of time. Due to this behavior, elementary particles temporarily cease due to the frequency of the electrons becoming lower. This occurs because its position is spread out over a large distance. So there exists a connection between quantum mechanics and the quantum field.

Can Intuition be learned?

Let's look to nature for the answer. Where does nature reflect signs of strong intuition? Most animals will flee an area days before a tsunami or earthquake because some animals can detect infrasound (sounds lower than 20Hz). Humans can hear sounds between 20Hz and 20kHz. Infrasound includes the region between 4Hz and 8Hz which is in the theta wave frequency. Studies have proven remote viewing is enhanced when a person emits low theta brainwaves. When professional remote viewer Ingo Swann's brainwaves were measured while he was doing a remote viewing session, he showed strong theta brainwaves (Persinger 2003).

Before the Parkfield California Earthquake on Sept. 28, 2004, which measured 6.0, there was a disturbance in earth's ionosphere of which the Schumann resonance is located (Signals from the Rocks. Ernst D. Schmitter. 2008). This frequency which is approximately 7.5Hz is located in the infrasound region (20Hz and lower) of which humans cannot detect. Many animals are quite capable of hearing sounds in the Infrasound range. The pre-disturbance is shown below.

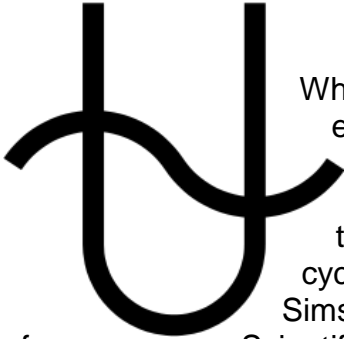


Infrasound is so powerful that breeding songbirds can detect an approaching tornado from more than 500 miles away. (Henry M. Streby et al., 2015). This is due to the fact that tornados emit strong infrasound with peaks between 2Hz and 18Hz (Jeffrey E. Passner, U.S. Army Research Laboratory, White Sands Missile Range. 2003). This provides a clear connection that low frequency wavelengths are enhancing precognition and that during periods of stronger Infrasound, these waves can be picked up more clearly. For example low theta (4Hz to 8Hz) which is used for successful remote viewing is below 20Hz. Anyone can learn to induce a theta state of mind to greatly enhance their

precognitive abilities. Just as birds can detect future events using infrasound, you can train your mind to do the same.

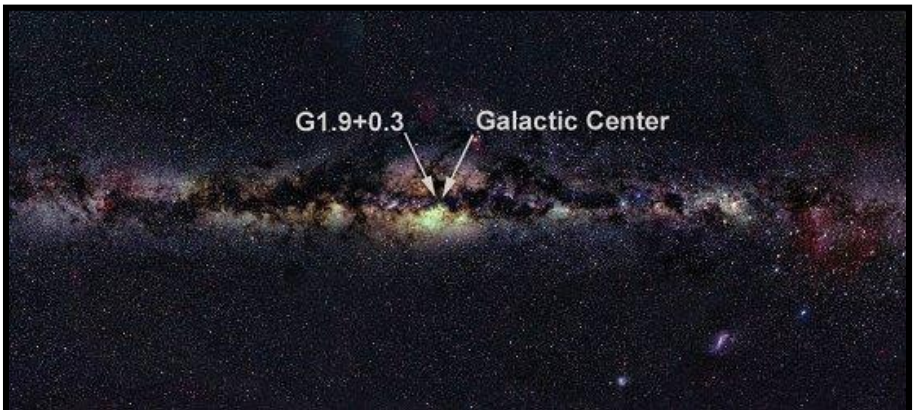
Chapter 2

Ophiuchus, 13:30LST and its Connection to 13:30LST



When precognition researchers examined the accuracy of thousands of precognitive tests, along with the time of day these studies occurred, they discovered the precognitive cycle coincided at 13:30 LST. (Marsha Sims and James Spottiswoode. Journal

of Scientific Exploration. June 23, 1997). This is a period where the center of our Galaxy is just below the horizon. By knowing this we can use our remote viewing skills to their fullest. Now let's explore this region of sky a little closer. On the next page is an image of the Ophiuchus Constellation. Below is an image of where the center of our galaxy is located, which is very close to the Galactic Center.





**Ophiuchus is the constellation that
rises in the east at 13:30LST**

The Ophiuchus constellation is home to numerous white dwarf stars. Stellar Thermonuclear explosions from this region of space occur from 1 white dwarf star 1 red giant star orbiting close to one another. When the material from the red giant star builds up enough on the surface of the white dwarf, causes this reaction to take place about every 20 years. Other white dwarf stars in the region include: The Little Ghost Nebula, Sabik, Eta Ophiuchi, Gamma Ophiuchi and Lambda Ophiuchi.

What are White Dwarf Stars?

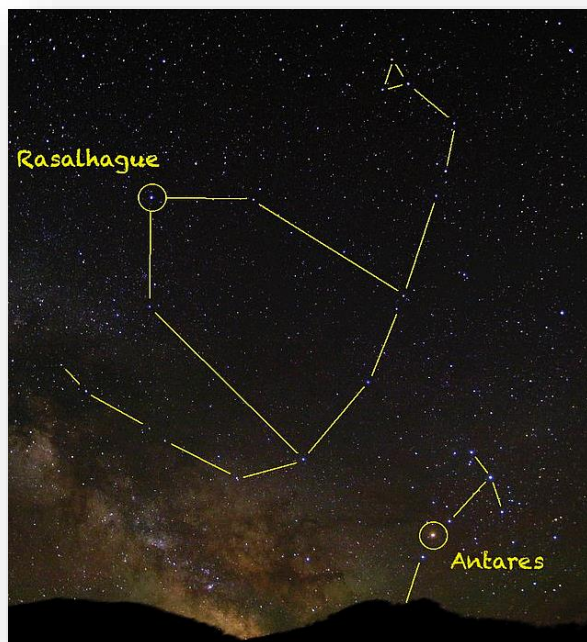
White dwarfs are stars that have spent their fuel and are the spent cinders of the original stars' cores. The usual size of a White Dwarf star is about the size of our Earth and is made up of extreme gravity, an average of a ton per cubic centimeter. This small and extreme area of thick density causes an extreme bending of light photons in its regional vicinity (redshift).

The Ophiuchus constellation has another region named "Pillars of Creation", in the Eagle Nebula (Messier 16), a famous star-forming region, a region of "rebirthing". Below is an image of the Pillars of Creation.

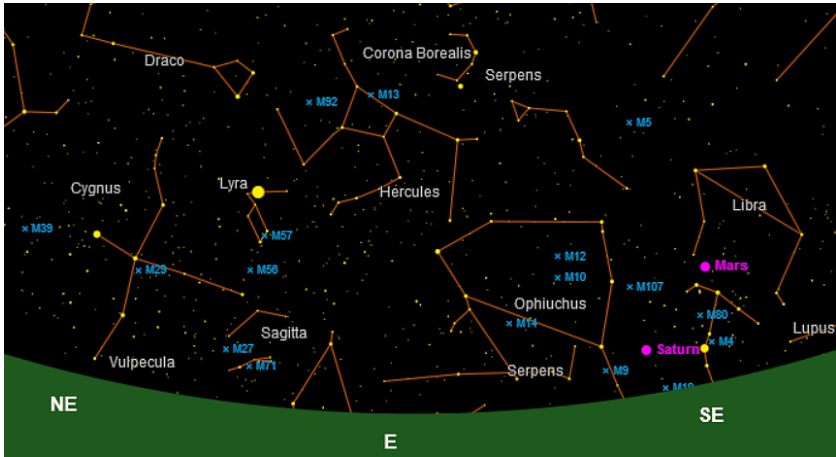


Ophiuchus has more dense stars among it than any other constellation in our night sky. This type of occurrence in our

universe is known as a "globular cluster" and these regions are very tightly bound by gravity. The term Globular Cluster is derived from the Latin term "small sphere."



The brightest star in the Ophiuchus constellation is Rasalhague. Rasalhague lays at the very tip of the constellation Ophiuchus making it the first brightest star to rise at 13:30LST. Rasalhague is also known by the names a Oph, a Ophiuchi and Alpha Ophiuchi. A little to the left of Rasalhague as it rises in the east is the constellation Cygnus.



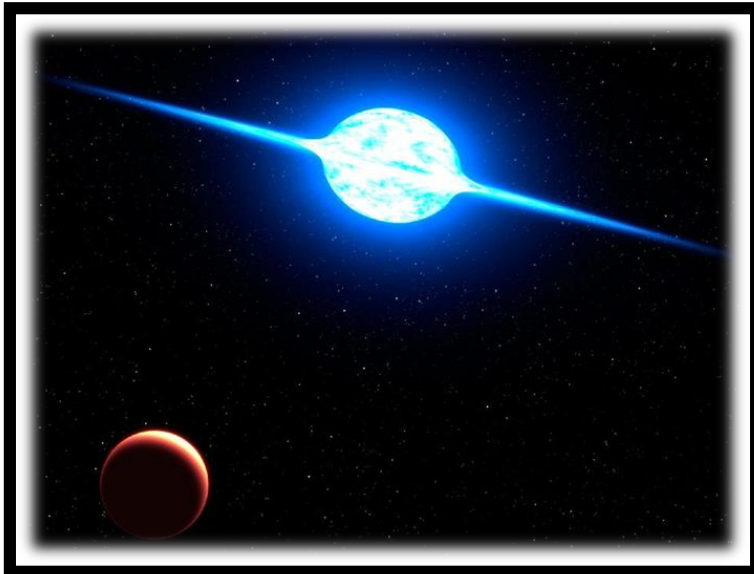
Just below the Ophiuchus constellation is the region of sky known as the Milky Way in the Sagittarius / Scorpio constellations, which contains numerous black holes emitting lots of energy.

Precognition, 13:30LST and Rapidly Rotating Stars

If you want to build a time machine, one of the easiest ways to do it is to find a long massive cylinder and spin it around its longitudinal axis at high speed. This is called a Tipler Cylinder. U.S. astronomer Frank Tipler suggests the easiest way to do this would be to take a piece of material that is 10 times the mass of a Sun and squeeze it together. After doing this to increase its density, roll it out into a long, thin, super-dense cylinder. Next spin this cylinder a few billion revolutions per minute. Rotation at high speed creates a frame-dragging effect, thus causing a series of fields to form that are made up of closed time-like curves which become traversable to achieve subluminal time travel to the past. If a person was travelling in a spiral fashion around the cylinder, they would immediately find themselves in a "closed, time-

like curve." They would emerge thousands or depending on their rate of rotation, billions of years from their starting point. They may even find themselves light years away from their original position.

Why build a Tipler Cylinder when they already exist in nature? Rasalhague happens to rotate at half a million miles an hour. It is not yet a neutron star. Due to this rapidly rotating speed Rasalhague is 20 percent larger at its equator compared to its north and south poles. And because stars emit frequencies in the low frequency spectrum including 0.1Hz (A Very Low Frequency Gravity Wave Antenna. C. H. Hossfield 1994) perhaps this is what is enhancing remote viewing during 13:30LST. The following image is what a sun like star spinning at high speed looks like.



.....

Meaning of the star Rasalhauge

Rasalhauge means the Head of the Serpent collector, giving way to the symbol used today as an Asclepius which is the medical symbol that looks like 2 circling serpents. It shines with the intensity of light of 53 Suns, giving it a radius of 11.4 times solar. Rasalhauge moves relative to the Sun at 68 kilometers per second, which is on average more than four times normal compared to other stars.



A short distance above Rasalhauge lies the constellation Hercules. Rasalhauge is so close that it should be included in the constellation Hercules. In Greek mythology Heracles was the son of Zeus who was immortal. Hercules is also associated with the Sumerian hero Gilgamesh.

Now what other suns (not neutron stars) are rotating at high speed? My research lead me to only one other star. There exists a star in the southern hemisphere located in the Tarantula Nebula called VFTS 102 which was discovered in 2011. This star rotates at 12.5 million miles per hour and is 25 times larger than our sun and 100,000 times brighter, making it one of the fastest rotating stars found to date.

VFTS 102 is located in the southern hemisphere

Because the 13:30LST time was found to boost remote viewing accuracy based on data obtained from North America, it is very likely that if a large amount of remote viewing data obtained from the southern hemisphere was sifted through that we would see a peak in remote viewing accuracy when VFTS 102 rises in the east when doing

remote viewing in the southern hemisphere. This means we can also use peak accuracy periods of remote viewing to look for rapidly rotating stars, because there seems to exist a correlation between rapidly rotating stars and peaks of accurate remote viewing. Now let's explore the myths and history surrounding the Ophiuchus constellation.

As we just covered, this region of sky contains one of the closest new star forming regions to our solar system, about 407 light years away from Earth with more than 300 young stars. Many of these stars average about 300,000 years old compared to the universe's oldest stars which are over 12 billion years old. The region also contains an unusually large number of clouds of molecular hydrogen which is a key molecule that allows new stars to form.

The date and time the declaration of United States Independence was signed which was at approximately 5 p.m. on July 4th, 1776 (at approximately 11:45 LST almost 2 hours from 13:30LST), occurred during the time the constellation Ophiuchus was rising in the east. Because Ophiuchus is not officially recognized as a constellation, many astrologers use Sagittarius as the constellation, which is extremely close to Ophiuchus. Now let's explore the mythology of the constellation Ophiuchus.



Ophiuchus is associated with the man Imhotep. Imhotep was known to the ancient Greeks as 'Aesclepius'. Ancient Egyptian texts state that Imhotep brought the art of healing to mankind. Imhotep was an Egyptian person of wide ranging knowledge who served during the Third Dynasty of King Djoser as chancellor to the

king. He also served as high priest of the sun god Ra and oversaw construction of the first pyramid in Egypt (Wilkinson, Richard H. 2003. *The Complete Gods and Goddesses of Ancient Egypt*. Ch. 5.) During the time of Imhotep, people who were sick would make pilgrimages to Imhotep's temple asking to be healed. Others would receive a prophetic dream urging them to visit Imhotep for healing. Imhotep was also closely associated with the ancient Egyptian deity Thoth. In Egyptian visual art, he is depicted as a knowledgeable scribe. Did Imhotep learn how to connect with Ophiuchus using his subconscious mind, much like we do during remote viewing, using it to become an expert on such a wide range of topics?

Astrology Attributes for the Ophiuchus Constellation -

Longevity, interpreter of dreams, vivid premonitions, attracts good luck and fruitful blessings, intuitive, serpent holder, lofty ideals, seeker of peace and harmony, doctor of medicine or science, seeks higher education and wisdom, overseer, supervisor of work, fame – either grand or completely misunderstood, aspirations of healing the ills of man, architect, builder, reaches for the stars, figuratively and literally, tax assessor, or levy's taxes, astrological talents, large family indicated, but apt to be separated from them when young, the number twelve holds great significance, notable father, apple of father's eye when young, high position in life expected [depending on aspects] highest fame and legend comes after death, feelings of granular, wise, genius mentality, likes to wear clothing of vibrant colors, and plaids in particular, receives the favor of those in authority, foresight and good fortune to benefit from hard times, has secret enemies in family or close associations, many jealous of this subject. For 19 days, from November 30th to December 17th, the Sun travels through the constellation 'Ophiuchus' upon which time it enters Sagittarius.

Neighboring Constellations

Scorpio = November 23 – November 29

Ophiuchus = November 30 – December 17

Sagittarius = December 18 – January 18

Capricorn = January 19 – February 15

Aquarius = February 16 – March 11

Pisces = March 12 – April 18

After 13:30LST the period of Noise

A short while after 13:30LST is when the constellation Scorpio rises and the Milky Way comes over the eastern horizon. This is a period where remote viewing accuracy decreases. The upper region of Scorpio contains the star Antares. In Astrology the Star Antares rules cosmopolitan views, pride, grandly liberal and commanding. If it happens to be rising, or culminating its properties include: destructiveness, liberality, military honor and preferment, malevolence, broad-mindedness, evil presages and danger of fatality and makes its natives rash, ravenous, headstrong and destructive by their own obstinacy. Now doesn't this sound a lot like "noise" to a person that would be remote viewing, compared to the attributes of the Ophiuchus constellation? Many ancient myths depict the constellation Scorpio as a Scorpion or "one that stings" giving it a painful significance.

The Star Arcturus

The next brightest star all the way to the right of Rasalhauge is the star Arcturus. This rises roughly at the same time Rasalhauge does. In Astrology the star Arcturus is known for riches, honors, high renown and prosperity and is a star especially favorable for undertaking long journeys. If someone is remote viewing something that has not happened yet, and Arcturus is known for being favorable for undertaking long journeys (the future about to happen) than this would be why it is a favorable time to remote view.

The Story of How Arcturus Electrified Chicago

According to Wikipedia, the light from the star Arcturus was rumored to be the mechanism that opened the 1933 Chicago World's Fair. This is because the star's light had begun its journey at about the time of the previous Chicago World's Fair in 1893. The photocell used to illuminate the opening of the world's fair was made by Western Union and General Electric. There are also numerous Arabic, Aboriginal, Chinese, Inuit, Indonesian and Polynesian myths about this star. Most of these myths are positive. Such as the Indian myth calling it "very beneficent", or the Japanese who call it the star of wheat, and in Arabic terms, "the uplifted one", and in ancient Greece "He cometh". Edgar Cayce also stated in his teachings that beings exist in the Arcturus solar system and that they are one of the most advanced civilizations in this galaxy and that Arcturus is a prototype of Earth's future. Now how could he have known years ago that this part of the sky is related to earth's future before the 13:30LST time discovery?

What would be interesting is to do a summary of events where people take journeys and to see if there is a reduction in accidents during the first 2 hours Arcturus rises in the east. Considering most planes depart in the morning hours from the busiest airports on the east coast of North America

and Arcturus is rising in the east during October each year, it would be interesting to summarize this data and see if this is the safest time to fly or undertake similar journeys.

Other Facts about Arcturus

- The Surface Temperature of Arcturus is 4,000 C
- The closest approach of Arcturus to our sun will happen in about 4,000 years, when the star will be a few hundredths of a light-year closer to Earth than it is today, and over the long term it is continuing to move away from earth (we are downwind from it).
- Arcturus was the first star to be discovered in the daytime and was thought to be 40 light years from earth, however it is in fact 37 light years from earth.
- Arcturus shines approximately 114 times more brightly than our own sun.
- Arcturus releases more than 215 times more x-ray background radiation than our own sun.

Chapter 3

Why Cycles of Cosmic Ray activity enhance Remote Viewing

One of the most striking finds during our research was the significance of cosmic rays. There were always more successful ARV sessions during lower cycles of cosmic ray activity (cosmic rays declining). The explanation for this may be due to time dilation. Cosmic rays are made up of Muons. Muons are particles produced when cosmic rays hit earth's atmosphere. They occur at an altitude of 15 km. Their average lifetime is approximately $\tau = 2.2 \cdot 10^{-6}$ s. In Newtonian mechanics, it simply means the muons move approximately $c \cdot \tau = 660$ m before they decay, not allowing them to fully reach Earth. However, in fact a large fraction of muons actually reach the Earth. How can we explain this? Time dilation is the only explanation.

What is Time Dilation?

Time dilation is the difference of elapsed time between two events occurring when watched by observers as they are moving relative to each other. The Forbush Decrease may also be attributed to gravitational time dilation. Gravitational Time Dilation has also been found to occur during solar eclipses (A determination of the deflection of light by the Sun's gravitational field, from observations made at the total eclipse of 29 May 1919. F. W. Dyson, A.S. Eddington and C. Davidson 1920). Cosmic rays may also be showing effects of radiation pressure. Because light is one of the main forces influenced by radiation pressure due to its momentive force, cosmic rays also have a force of momentum which builds up over time. This radiation pressure caused by the momentum may be contributing to the gravitational time dilation effects.

Time and Its Effects Vary With Solar Activity

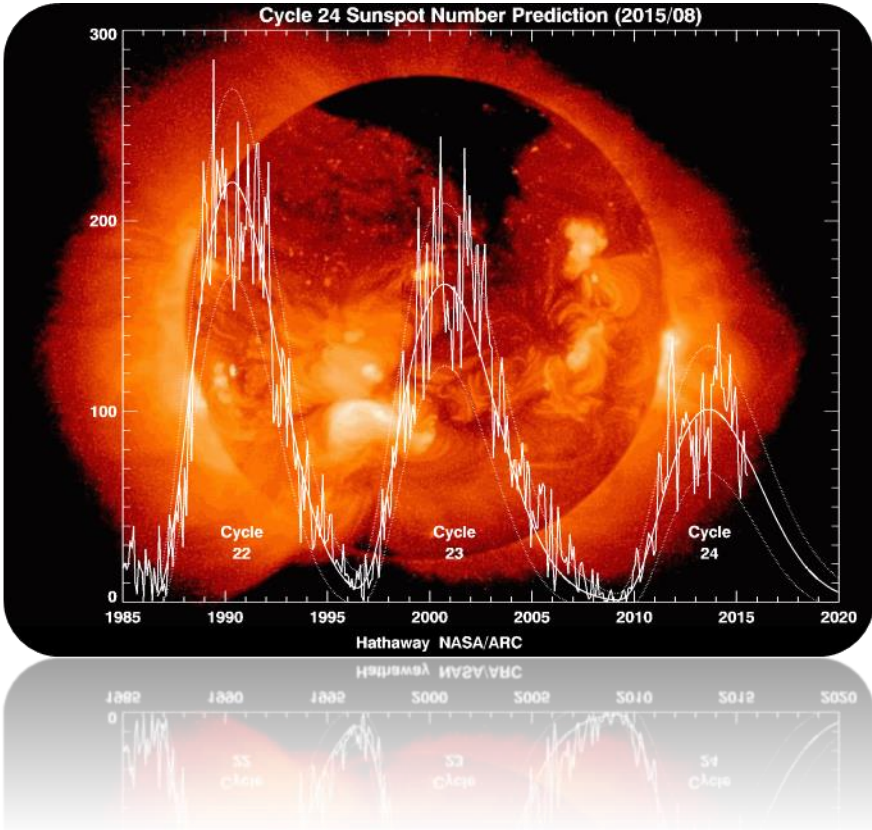
An excellent way to look at this is in the cycles of solar activity which peak and decline every 11 years, much like the moon waxes and wanes. At the solar institute we have used these cycles to correctly forecast stock market crashes, including the 2016 financial turbulence as well as another financial turbulent period due to arrive between the years 2027 and 2030.

In order to plot large scale events that govern the grand cycle that pushes man on his path towards higher evolution, solar cycles are our best tool. This allows us to plot events that occur up to 22 years out based on sunspot cycle forecasts. Only large scale events such as the stock markets or similar which affect humanity as a whole can be accurately predicted using this long term method.

To do this we chart a history of the stock market and its previous behavior in relation to solar activity. If the markets show a decline when sunspots are at a decline, and there has been a previous high before and the future sunspot cycle is lower than the previous high, it creates a "double impact" of the effects of solar activity. This means that the coming low of solar activity, if lower than the previous high, will than negatively affect the stock markets in the future when the next low approaches.

Another excellent example of how a solar cycle can create a cause and effect is the year 2000 (solar cycle 23). As we were approaching the peak of solar cycle 23 during the year 2000, time seemed to flow fastest and developments in computer technology such as social networking and similar Internet related technologies seemed to be embraced more. As solar cycle 23 declined, reaching a low around 2008, there was the stock market crash and less innovation.

As we can see around 2016 we are entering a bottoming out of the solar cycle and the previous 2 cycles were higher than the current cycle we are in.



During this period, the experience of time will feel like the following:

Months will feel like weeks. Weeks will feel like days. Days will feel like hours. An hour will feel like a moment....

Another decline in stock market is due to take place between 2025 and 2030. More about this can be found in our report titled: **Sunspots and the Great Depression** available at ez3dbiz.com. So we can see that we are a part of a giant wheel moving within the larger plan of man's evolution.

How Solar Activity Affects the Speed of Earth's Rotation

During Dec 13, 2006, our sun sent a stream of particles and radiation towards Earth from a recent solar flare. During this event Purdue nuclear engineer Jere Jenkins was measuring the decay rate of manganese-54. Manganese-54 is a short-lived isotope that is used for medical diagnostics. He noticed the decay rate dropped slightly during this solar flare event. The drop in the decay rate started began showing up a day and a half before the solar flare actually took place. Based on recommendations from Dr. Peter Sturrock of Stanford, Jere Jenkins teamed up with Ephraim Fischbach to explore how solar activity affects the decay of radioactive materials.

In August of 2010 Purdue Professor Ephraim Fischbach, as well as scientists from Stanford discovered that the decay rates of radioactive materials occurred faster during summer and slower during the winter. The test was officially confirmed by teams at the US Department of Energy's (DOE) Brookhaven National Laboratory. The test was also confirmed by the Federal Physical and Technical Institute in Germany. The study concluded that seasonal variations occurred in the decay rates of silicon-32 and radium-226. The researchers also discovered that decay rates varied every 33 days. This is the same period of time that roughly matches a full rotation of our sun (the rotation rate of our sun is 28 days). Could this mean that the reason radioactive substances decay faster during summer is because time is moving faster during summer, which is the time of year earth is furthest from our sun (its aphelion)?

During August of 1972, massive solar activity uncovered a discontinuous change in the length of day (LOD) immediately after the solar flare event. Calculations carried out by numerous observatories from around the world used UT2 time (Universal Time with the effects of the Chandler Wobble and seasonal variations removed). By calculating differences between Atomic Time (AT) and UT2 time, a disturbance was shown as the Earth's spin slowed down and the length of day increased.

John Gribbin noticed that during a solar storm in August 1972 that it created a "discontinuous change in the length of the day" caused by a change in earth's spin rate (J. Gribbin and R. A. Challinor. *Science*. 1971). The great solar storm of 1959 also contributed to an effect in the perception of time (A. Danjon. *Informations de l' Observatoire de Paris*. CR Acad. Sci. 1962) with effects resulting from changes in earth's rotation. (Revisiting a Possible Relationship between Solar Activity and Earth Rotation. R. Abarca del Rio and D. Gambis. September 2010). Solar activity also affects the speed at which earth's atmosphere travels around our earth. This can cause a delay to occur between solar activity and the speed of the atmosphere (D. Djurovic. January 1990).

When solar activity is lower, ionizing radiation in earth's stratosphere will increase due to more cosmic rays. This is because higher solar activity tends to push cosmic rays away from the Earth. The lower the solar activity, hence the more cosmic rays enter earth's atmosphere, creating more ionization (Rotation of the Earth, solar activity and cosmic ray intensity. T. Barlyaeva et al).

Researchers have studied the intensity of cosmic rays and their effect on the rotation of the earth (Rotation of the Earth, solar activity and cosmic ray intensity. 2 July 2014). Some scientists have theorized that the sun's heating or ionized atmosphere from higher cosmic rays acts as a heat engine due to earth's atmosphere becoming compressed. This can cause earth's rotation to speed up. A 1966 study confirmed

there existed an influence in earth's atmosphere arising from solar activity (E. Schatzman. *Interplanetary Torques*. 1966). More recent studies notably Bourget et al (1992), revealed correlations between solar activity and the length of the day and studies done in 2003 (Abarca del Rio et al. 2003) and 2008 Winkelkemper (2008) showed the length of day and atmospheric angular momentum were associated with changes from solar activity.

More in-depth studies have shown that Earth's mantle is responsible for the acceleration or de-acceleration effect according to variations in cosmic ray intensity caused by solar activity through the zonal winds. Because earth's mantle is so closely linked to seismic activity, recent studies have shown a link between that cosmic rays and earthquakes (Anderson, 1974). An excellent study published in February 2015 by M. Kovalyov and S. Kovalyov titled: On the relationship between cosmic rays, solar activity and powerful earthquakes, concluded the following: "cosmic rays play a much more prominent role that is currently believed; specifically that 1); cosmic ray intensity correlates with seismic activity on Earth with much accuracy than solar activity and 2); cosmic rays are influencing solar activity". As we covered earlier, during higher solar activity there will be less cosmic rays reaching earth because solar particles create a "shielding" effect, keeping the cosmic rays from completely reaching earth.

Because cosmic rays have been linked to cloud creation and we are starting to enter a new cycle of low solar activity, quite possibly another maunder minimum, expect to see higher rainfall than usual in certain areas in the years ahead.

(H. Svensmark and E.Christensen July 1997), (The influence of cosmic rays on terrestrial clouds and global warming. E. Pallé Bagó and C. J. Butler).

Studies have shown that increased rain fall occurred during a solar minimum, which caused a temporary increase in the reservoirs of ground water near earthquakes prone regions (Stothers, 1989; Tiwari and Rao. October 2001).

There also exists an 11 year solar cyclic variation occurring in the length of day (Challinor, 1971; Curries, 1981). Cycles of slower rotation have also been discovered in this cycle (Michelis et al., 2013). And effects from large individual solar flares have also been reported to affect the speed at which earth rotates (Danjon, 1962; Gribbin and Plagemann, 1973; Stothers, 1989).

My hypothesis - If there is a change in the length of the day caused by cosmic ray cycles which causes time to speed up (most common during summer) then the momentum of our consciousness continues forwards into the next cycle where cosmic rays start their decline (most common during winter). As our consciousness enters the period where time is slowing down, it is still speeding ahead and a trained focused mind can use that extra momentum to "look around the corner" of an approaching date. In short summary as cosmic rays grow stronger reaching a peak state, time flows fastest. After this peak has been reached and starts to decline, time starts slowing down. Even though these effects may be subtle, the ability for our subconscious mind to pick up on these subtle differences is what makes the ARV sessions more successful during these times.

Further Reading

Study of nuclear decays during a solar eclipse: Thule Greenland 2008. Javorsek et al. *Astrophysics and Space Science* 342 (1), 9-13

Evidence of correlations between nuclear decay rates and Earth-Sun distance. J.H. Jenkins et al. *Astroparticle Physics* 32 (1), 42-46

Preliminary Results from Nuclear Decay Experiments Performed During the Solar Eclipse of August 1, 2008. D. Javorsek et al. *Viii Latin American Symposium on Nuclear Physics And Applications* 1265

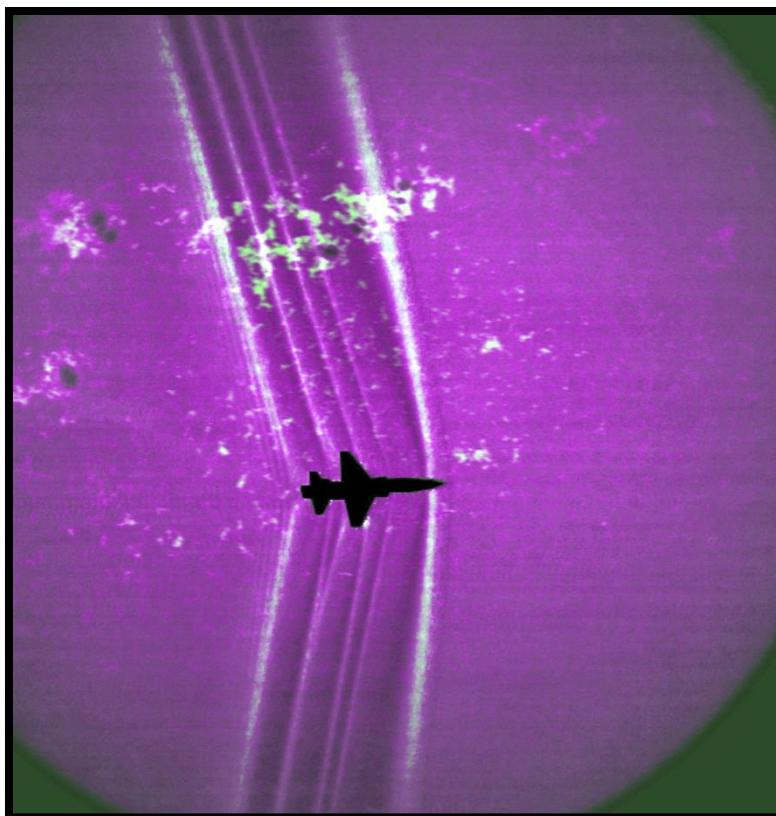
Further Evidence Suggestive of a Solar Influence on Nuclear Decay Rates. P.A. Sturrock et al. *Solar Physics* 272 (1), 1-10

Concerning the phases of the annual variations of nuclear decay rates. P.A. Sturrock et al. *The Astrophysical Journal* 737 (2), 65

Time-Dependent Nuclear Decay Parameters: New Evidence for New Forces? E. Fischbach et al. *Space Science Reviews*.

Cerenkov Radiation. Photons exceeding the speed of light.

This is an effect caused by radiation occurring in water due to the particles moving faster than the speed of light. Cerenkov radiation was discovered in 1934 by Pavel Cerenkov. He observed that the water surrounding some radioactive substances showed a faint blue glow. Cerenkov radiation occurs most commonly in the core of nuclear reactors. The radiation is a byproduct of the particles travelling faster than light speed. In order for Cerenkov Radiation to occur the particles must be electrically charged.



Pink Noise is also called "flicker noise" and creates

recombination noises in transistors. In advanced mechanics, pink noise exists in undersea currents, **in the rate of earth's rotation** and the flowing of sand through an hourglass. In transistor circuits, pink noise appears from recombination effects that occur on semiconductor materials and also from the fluctuations in temperature. Pink noise is also present in some metrological occurrences and from some of the radiation emitted from the sun and similar astronomical bodies.

Pressure Waves and Going Faster than Light

To understand how Cerenkov Radiation works, let's use the illustration of a sonic boom as an example. As an airplane travels through the air, its wings create a pressure wave caused by pushing the air outwards creating lift. As the plane approaches the speed of sound, the pressure becomes so great the air cannot be pushed away fast enough limiting the plane to only fly just below the speed of sound. This causes an intense air pressure drop to occur that is moving away from the wing, similar to the wake you see left behind a boat. The low rumbling sound is created by the change in pressure after the airplane has flown by. Electrically charged particles which cause Cerenkov Radiation, behave in a similar fashion. Electrically charged particles contain moving electric fields due to their charge. When the charged particle is accelerating, this electrical field moves along with the particle. However, because the electrical field is carried by photons, it is limited in its speed to the speed of light. If the particle happens to be in a dense medium such as water, it can out-run its limited electrical field allowing it to exceed the speed of light. This occurs because the electrical field left behind creates its own bow shock wave. Because we are dealing with photons and not sound, instead of hearing a rumbling booming sound, instead we see a bluish glowing light. These photons also have shorter wavelengths, which also create the bluish glow.

Perception Creates our Experience of the Flow of Time

Architect Alton DeLong of the University of Tennessee showed that the smaller the scale of an environment, the faster a person's internal clock runs. DeLong created a series of experiments where volunteers imagined themselves to be in tiny rooms. Volunteers in a one-sixth scale room estimated that 30 minutes had passed, when in fact just 5 minutes passed.

- In one-twelfth scale rooms, the experience of time passed 12 times as fast.
- In one-twenty-fourth scale rooms, time passed 20 times faster.
- However, when volunteers were placed in an ordinary room their perception of time closely approximated regular clock time.

So perhaps solar activity is affecting how we perceive the flow of time. Speaking from personal experience, when I had a successful business that dealt with technology related products, whenever there was a peak in solar cycles, I was able to acquire many more sales, compared to cycles when solar activity was at a low. And if we look at the history of technological progress, we see that more technology is deployed/matures towards the peak of solar cycles. The Internet and the first social media sites came online during 1996, at the start of solar cycle 26. So the start of solar cycles fuels progress, and towards the end of the solar cycle progress slows down.

Thank you for your interest in Wormhole Theories, Sunspot Activity and Remote Viewing Stocks. This edition is available for immediate download in Nook or Kindle versions from Amazon.com. A PDF version is also available by visiting the book synopsis page at ez3dbiz.com. You may also purchase this book in paperback on Amazon.com.

Thank you once again and I wish you success in your remote viewing studies!

Scott Rauvers

Author

www.ez3dbiz.com